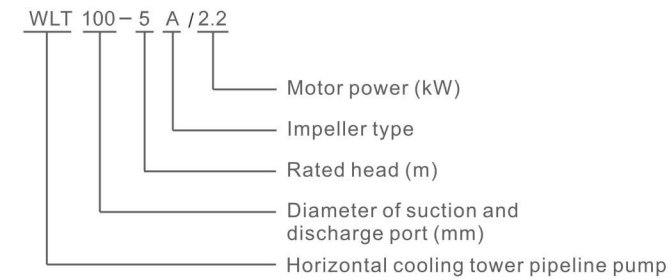


WLT Horizontal Cooling Tower Pipeline Pump



Model Definition



Structural Characteristic

The pump is non self-priming, single stage single priming horizontal, axial inlet, radial outlet. The motor is fixed with the base, and there is no need for additional support installation of the pump body end, which is easy to install, and it adopts the back pull structure and easy maintenance. WLT pump shaft and motor shaft are coaxial connection, small footprint and light weight. The impeller and pump body are designed using excellent hydraulic models, and the optimal operating conditions are customized according to market demand, resulting in high efficiency. Impeller, pump shaft and other key components are made of stainless steel. The casting adopts resin sand casting technology, with a smooth surface, good appearance quality, and dense organization.

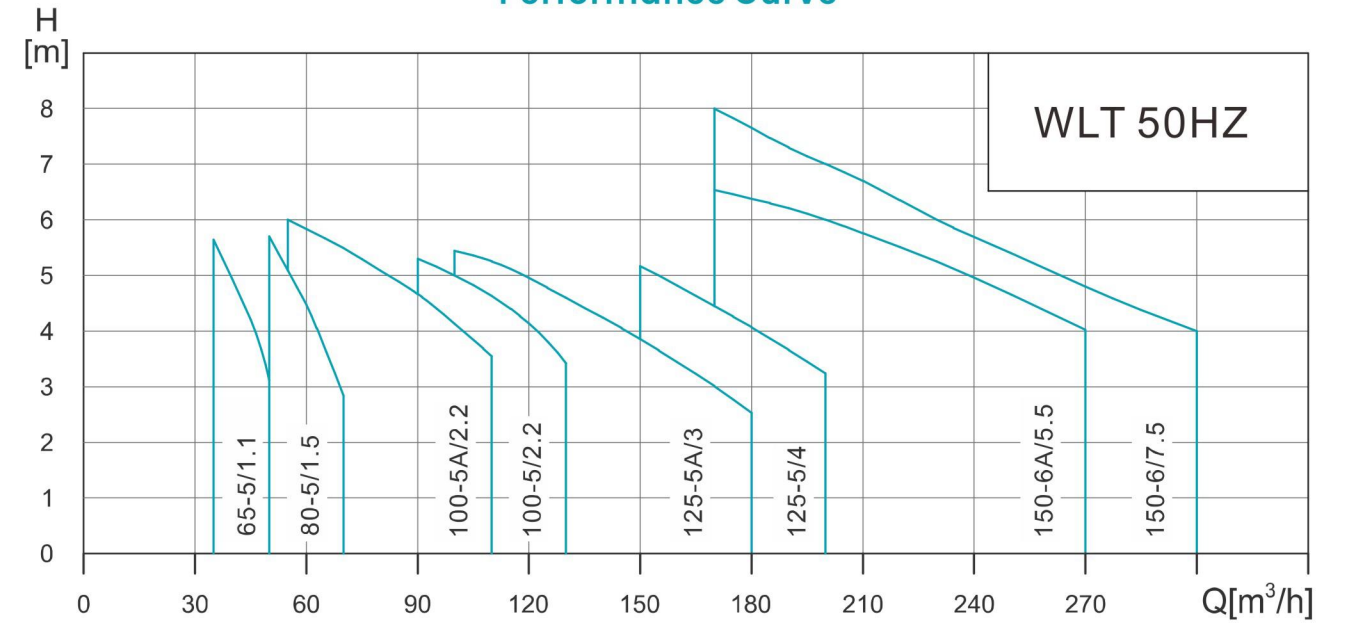
Application

The pump is mainly used for water circulation of closed cooling tower and condenser, It can also suitable for the cooling of various unit equipment; Can also be used for some large flow, low head occasions. The product is suitable for use in clean, thin, non corrosive, non flammable and explosive liquids, and does not contain any fixed particles and fibers that may cause mechanical or chemical damage to the pump. When used in situations where the liquid is viscous or dense, it can cause a decrease in the pump characteristic curve and an increase in energy consumption. Liquid temperature: -15°C~100°C Ambient temperature: Maximum 40°C Maximum working pressure: 6 bar

Curve Condition

The following principles apply to the performance curves:
 The curve tolerance conforms to ISO9906-2012, 3B grade.
 All curves are based on measured values of 3x380V at constant speeds of 2900rpm and 1450rpm for the motor.
 The test medium is clean water at a temperature of 20°C without any solid impurities and air.
 The use of the pump refers to the performance range of the bold curve to prevent overheating and overload of the motor caused by too small flow rate.

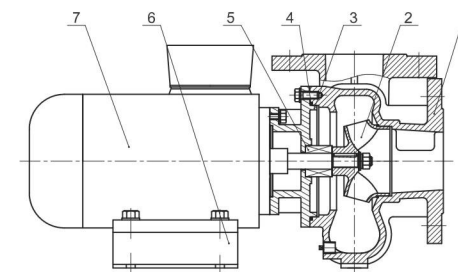
Performance Curve



WLT Performance Parameter

No.	Model	Q[m³/h]	H[m]	Power[kW]	n[r/min]
1	WLT65-5/1.1	40	5	1.1	2900
2	WLT80-5/1.5	55	5	1.5	
3	WLT100-5A/2.2	80	5	2.2	
4	WLT100-5/2.2	100	5	2.2	1450
5	WLT125-5A/3	120	5	3	
6	WLT125-5/4	160	5	4	
7	WLT150-6A/5.5	200	6	5.5	
8	WLT150-6/7.5	250	6	7.5	

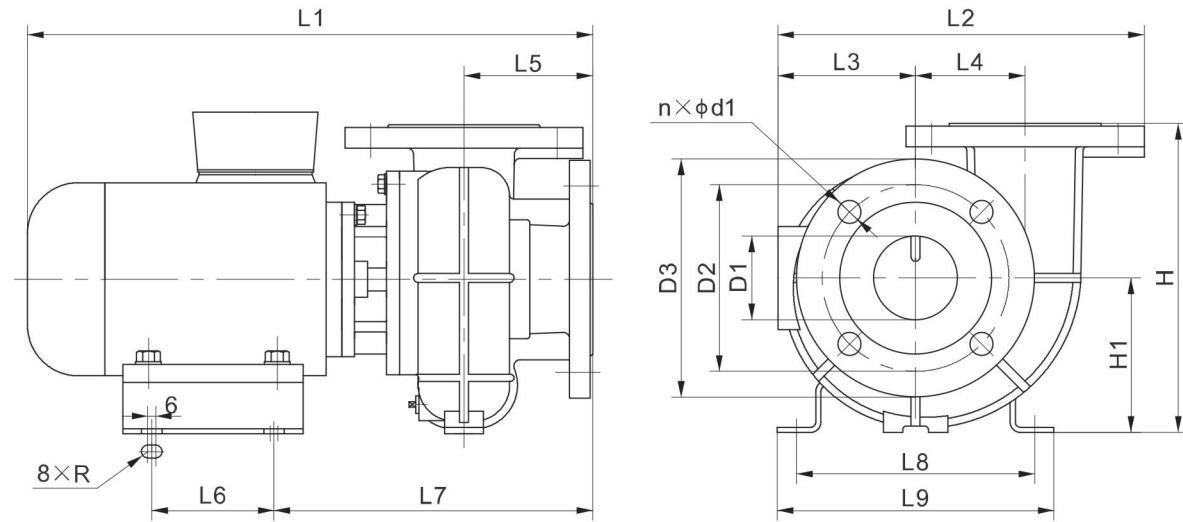
Structure Drawing Of WLT



Material

No.	Name	Material	AISI/ASTM
1	Pump case	Cast iron HT200	ASTM25B
2	Impeller	Stainless steel ZG07Cr19Ni9	AISI304
3	Pump head	Cast iron HT200	ASTM25B
4	O-ring	NBR	
5	Knife-edge mechanical seal	Silicon carbide/tungsten carbide	
6	Baseplate	Q235-A	AISIA570
7	Electric motor		

WLT Installation Dimension

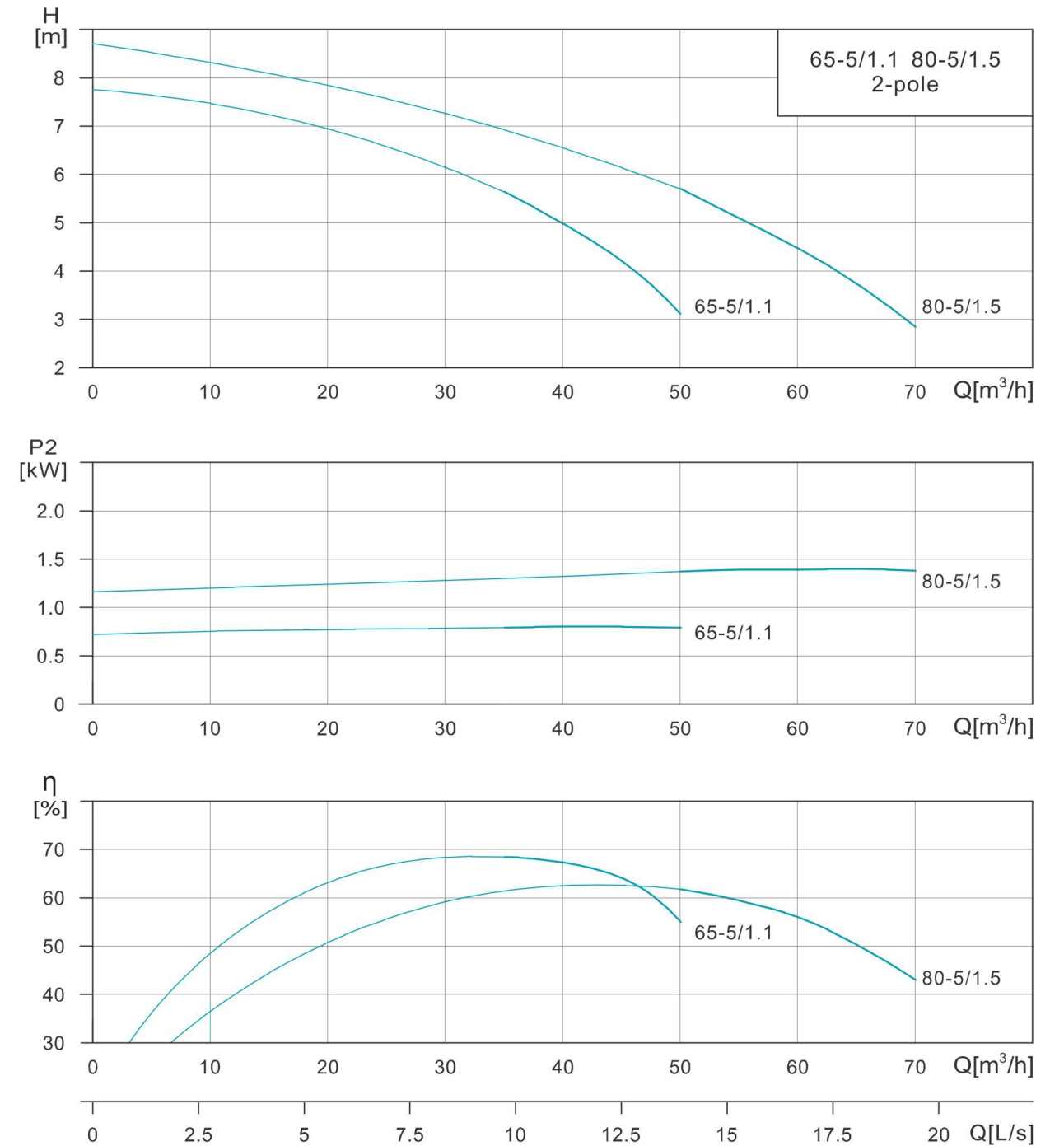


Model	Overall dimension			Installation dimension					Dimension					Weight (kg)				
	L1	H	H1	L2	L3	L7	L9	L5	L4	L8	L6	R	D1		D2	D3	n	d1
WLT65-5/1.1	443	240	120	278	100	247	215	100	85	185	95	5	65	145	185	4	18	29
WLT80-5/1.5	497	270	130	295	105	264	230	110	90	200	120	5	80	160	200	8	18	37

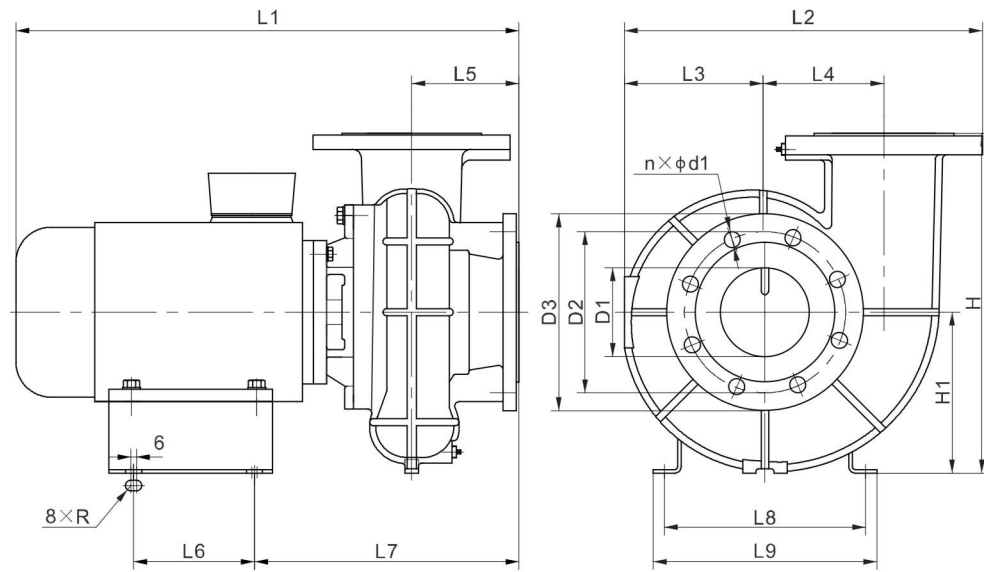
WLT Performance Table

Model	Power(kW)	Q[m³/h]	35	40	45	50	55	60	65	70
WLT65-5/1.1	1.1	H(m)	5.7	5.0	4.2	3.1				
WLT80-5/1.5	1.5					5.7	5.0	4.5	3.7	2.8

WLT Performance Curve



WLT Installation Dimension

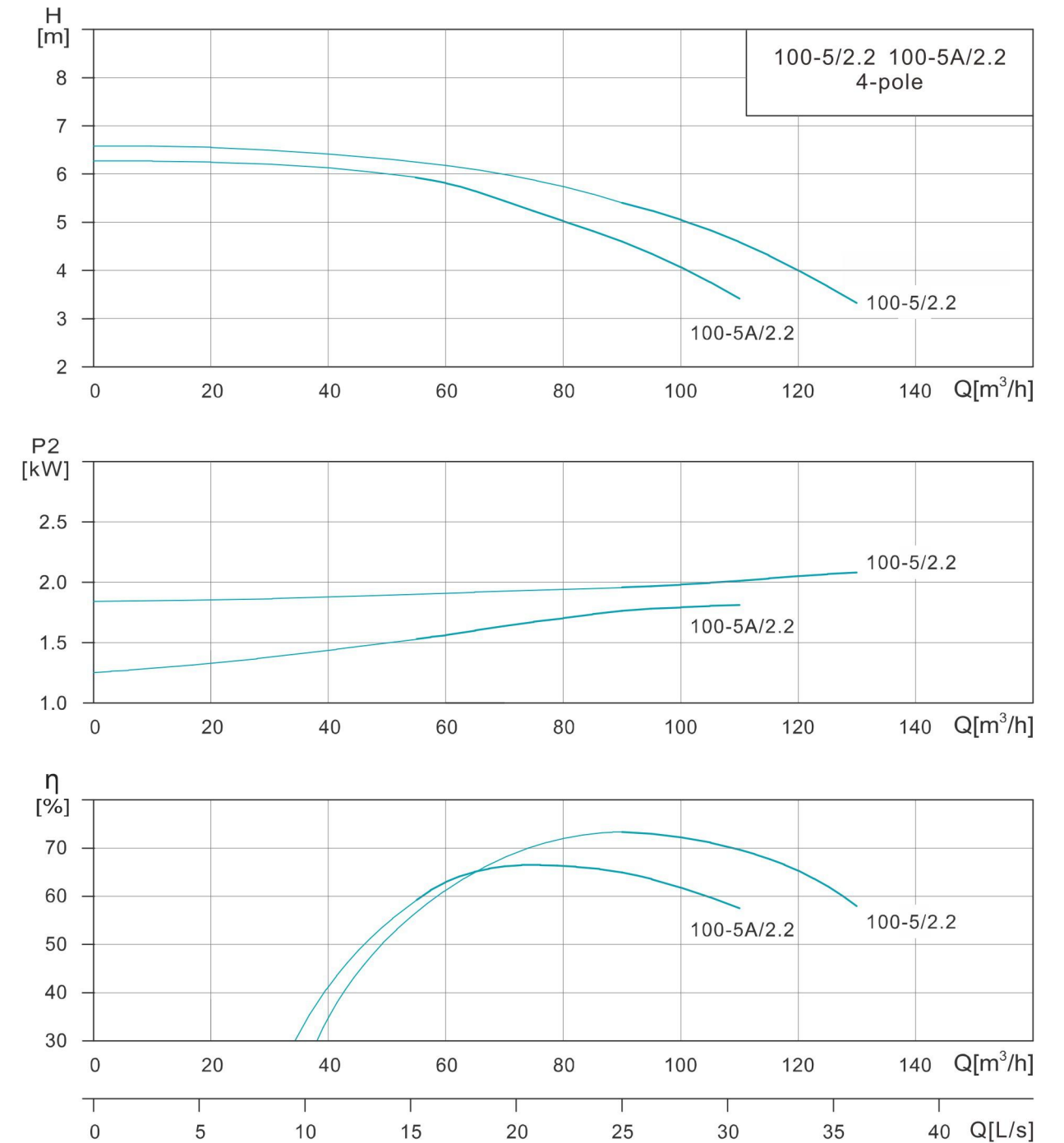


Model	Overall dimension					Installation dimension					Dimension					Weight (kg)		
	L1	H	H1	L2	L3	L7	L9	L5	L4	L8	L6	R	D1	D2	D3		n	d1
WLT100-5/2.2	605	380	180	400	155	296	250	120	135	225	135	6	100	180	220	8	18	60
WLT100-5A/2.2	605	380	180	400	155	296	250	120	135	225	135	6	100	180	220	8	18	60

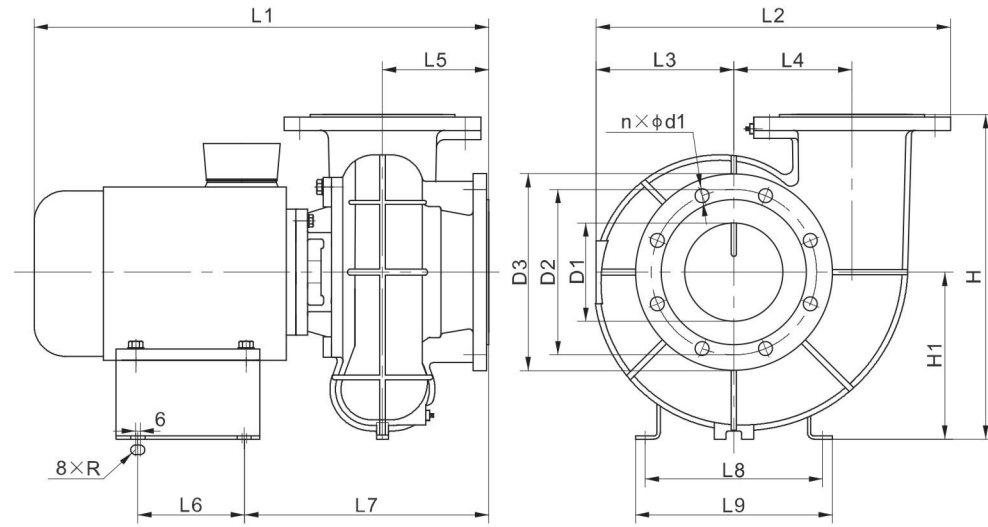
WLT Performance Table

Model	Power(kW)	Q[m³/h]	55	60	70	80	90	100	110	120	130
WLT100-5/2.2	2.2	H(m)					5.3	5.0	4.7	4.2	3.5
WLT100-5A/2.2			6.0	5.8	5.4	5.0	4.7	4.2	3.6		

WLT Performance Curve



WLT Installation Dimension

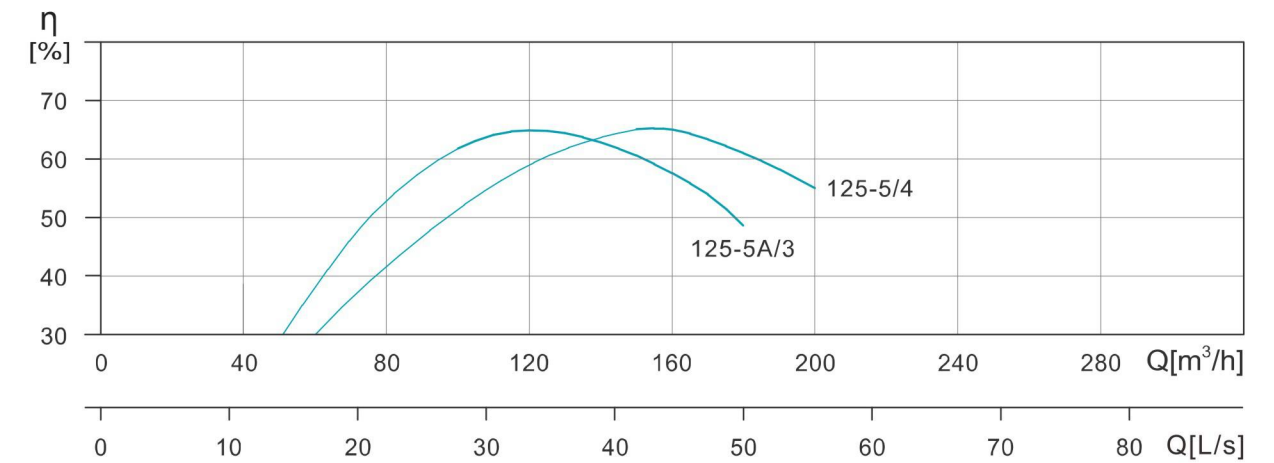
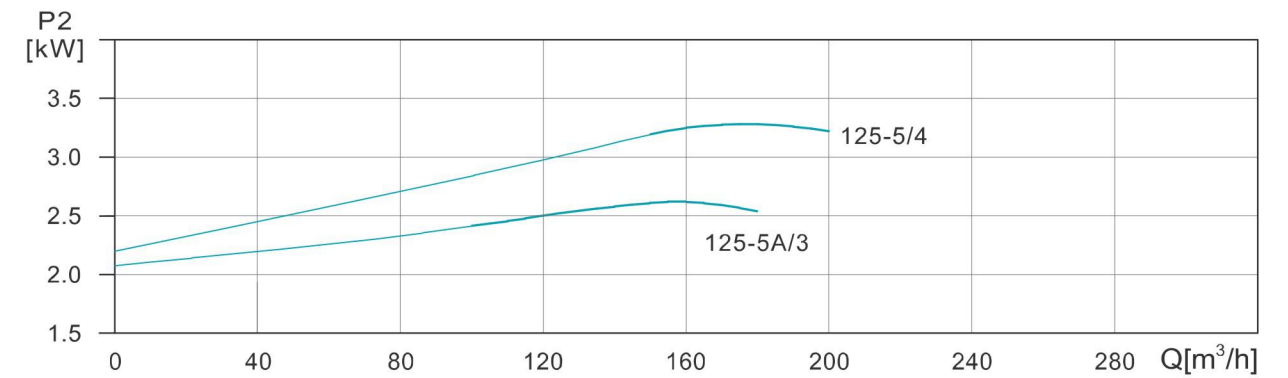
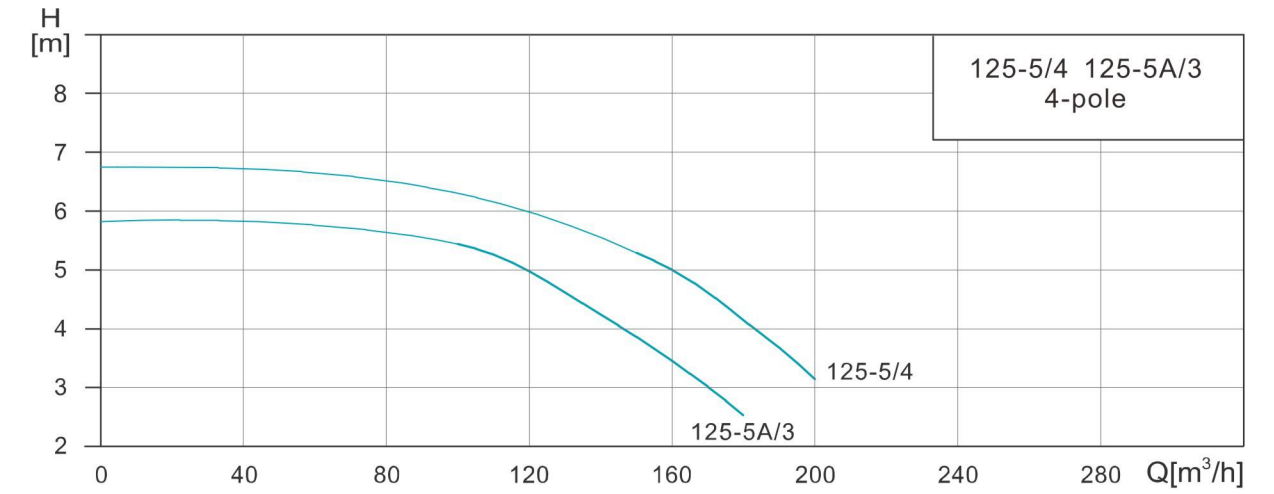


Model	Overall dimension					Installation dimension							Dimension					Weight (kg)
	L1	H	H1	L2	L3	L7	L9	L5	L4	L8	L6	R	D1	D2	D3	n	d1	
WLT125-5A/3	620	412	212	450	175	311	250	135	150	225	135	6	125	210	250	8	18	72.5
WLT125-5/4	629	412	212	450	175	318	280	135	150	255	135	6	125	210	250	8	18	83

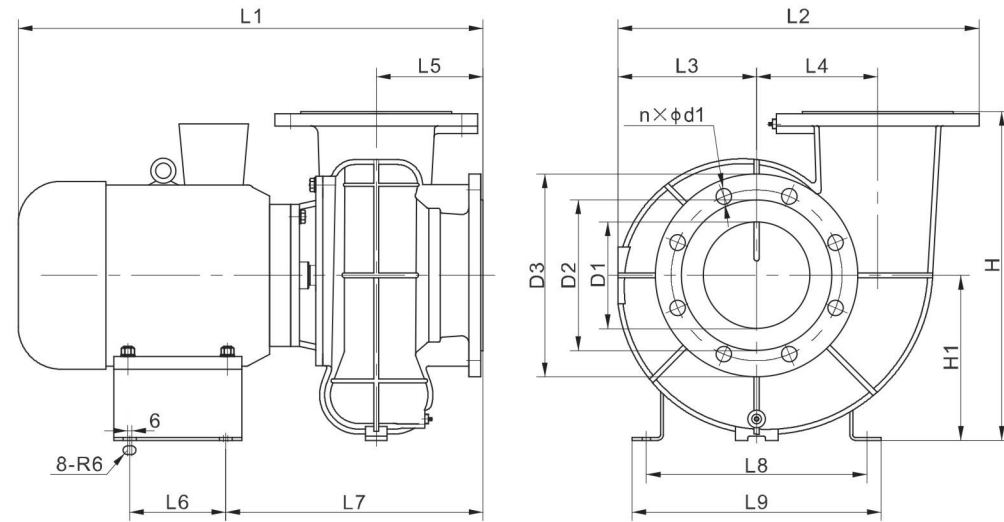
WLT Performance Table

Model	Power(kW)	Q[m³/h]	H(m)														
			100	110	120	130	140	150	160	170	180	190	200				
WLT125-5A/3	3		5.4	5.2	5.0	4.6	4.2	3.9	3.5	3.1	2.6						
WLT125-5/4	4								5.3	5.0	4.5	4.0	3.6	3.1			

WLT Performance Curve



WLT Installation Dimension



Model	Overall dimension			Installation dimension					Dimension					Weight (kg)				
	L1	H	H1	L2	L3	L7	L9	L5	L4	L8	L6	R	D1		D2	D3	n	d1
WLT150-6A/5.5	650	462	232	510	195	362	350	150	170	310	135	6	150	240	285	8	22	108
WLT150-6/7.5	690	462	232	510	195	362	350	150	170	310	135	6	150	240	285	8	22	117

WLT Performance Table

Model	Power(kW)	Q[m³/h]	H(m)														
			170	180	190	200	210	230	250	270	300						
WLT150-6A/5.5	5.5	H(m)	6.5	6.3	6.2	6.0	5.8	5.3	4.6	4.0							
WLT150-6/7.5	7.5		8.1	8.0	7.9	7.7	7.4	6.8	6.0	5.4	4.6						

WLT Performance Curve

